

Big on Lidl ideas

Clingy Creatures

It's time to bring a little bit of that outside in with some window clinging creatures.

Step 1

Simply mix the shaving cream, glue and flour together and add food colouring.



Step 2

Decant into squeeze plastic bottles. The more paint colours you make, the better!



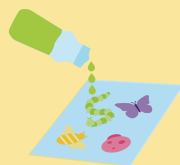
Step 3

Lay this bug stencil flat in a food bag, or lay cling film taut over the top of it.



Step 4

Then get squeezing!



Step 5

Allow to dry for 24 hours, then carefully peel off and stick to your windows.



Everything you need:

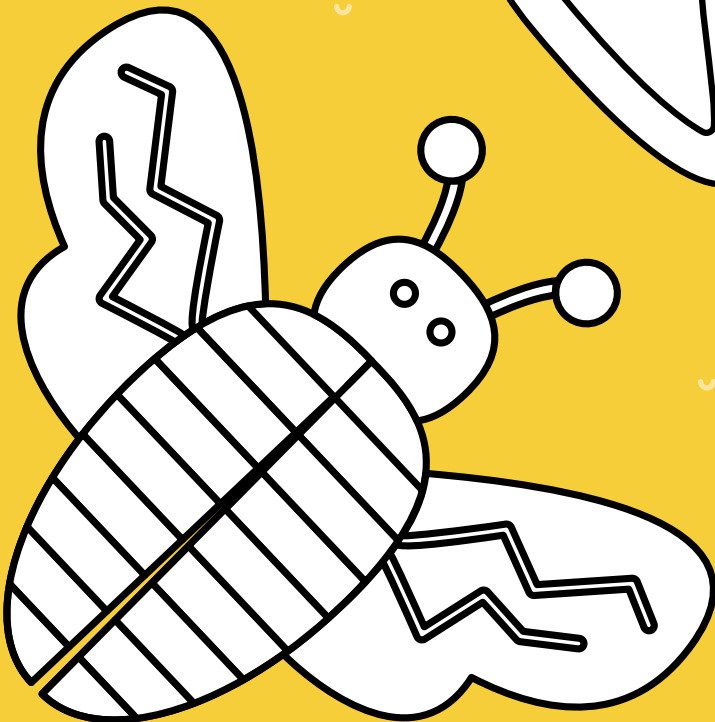
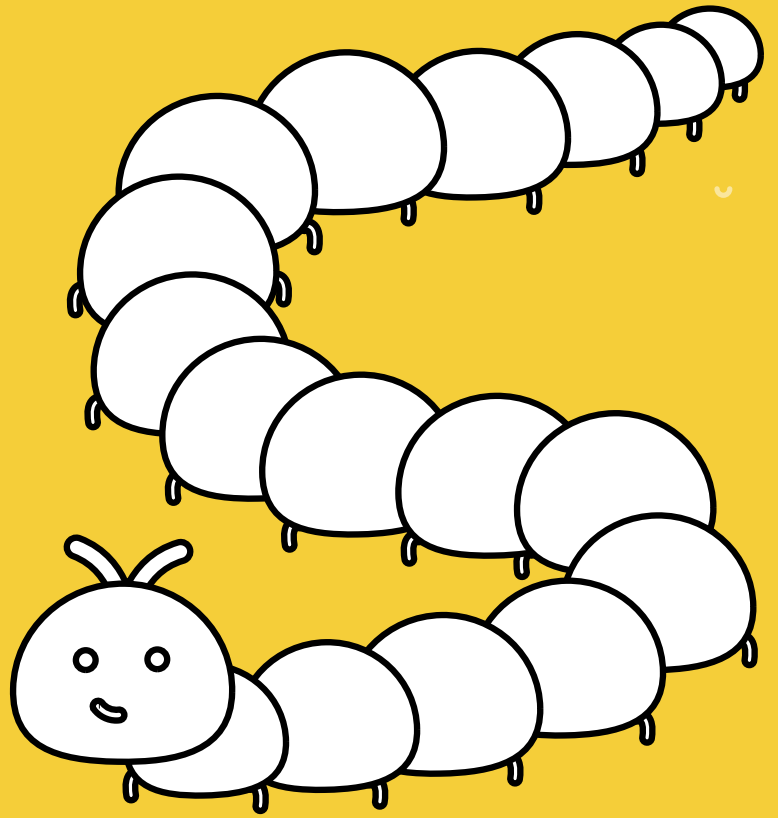
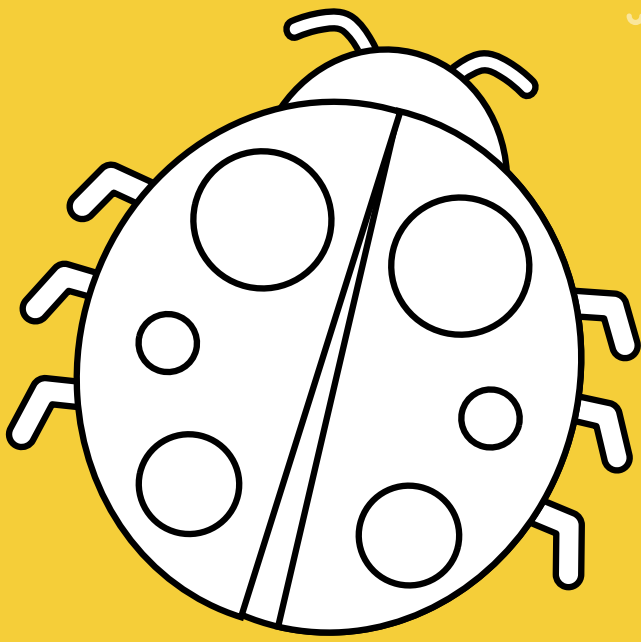
- ¾ cup of shaving cream
- ¼ cup of PVA glue
- ¼ cup of flour
- Food Colouring
- Food bag or cling film

Puffy paint in a ping!

If you've got a microwave, squeeze the paint on to paper and then pop in the microwave for 30-45 seconds. Watch the paint puff up and grow. Magic!

Tip

Recycled plastic ketchup bottles make great paint squeezers. Alternatively, fill a food bag with paint, tie, cut off the corner, and you have a paint piping bag!



Lidl parent hacks

- Make cleaning up fun – set a timer and see how many bits you can all put away before the alarm goes off!
- Nothing to see here – use an old fitted bed sheet over the table. The elastic keeps it in place, and it can be taken off and tossed in the wash.
- Crayon marks on the walls? Make a paste out of baking soda and water, then apply to the wall and lightly scrub. Voila!

